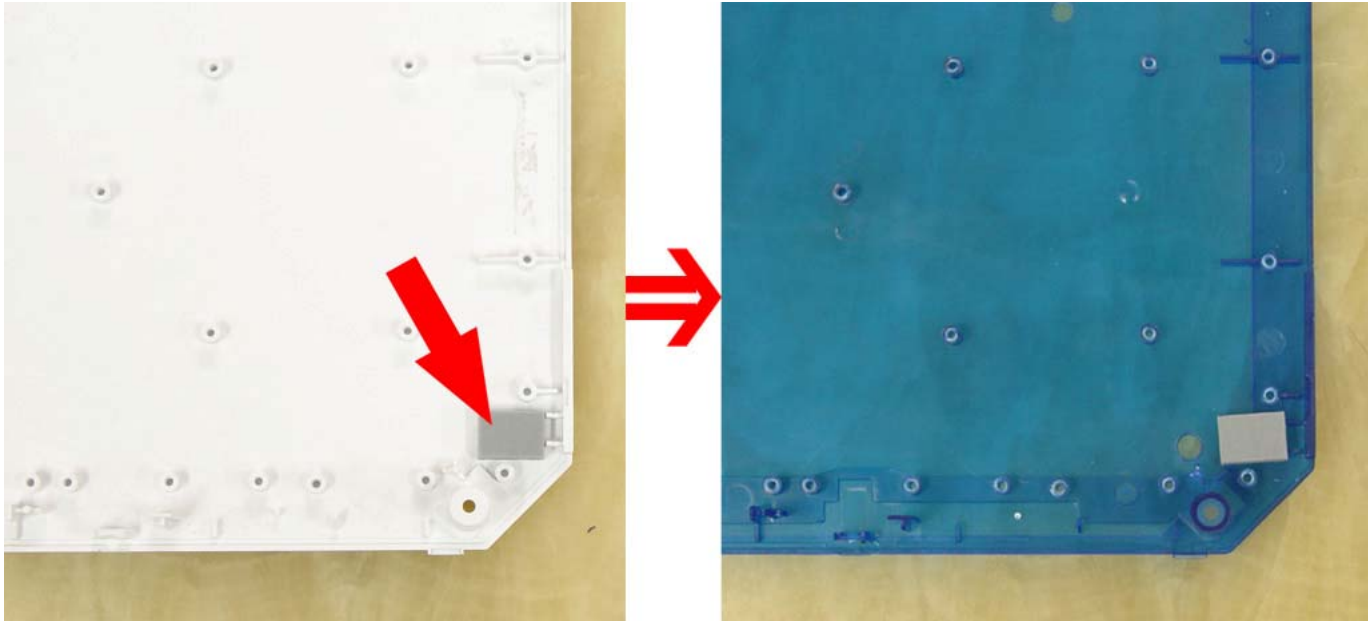


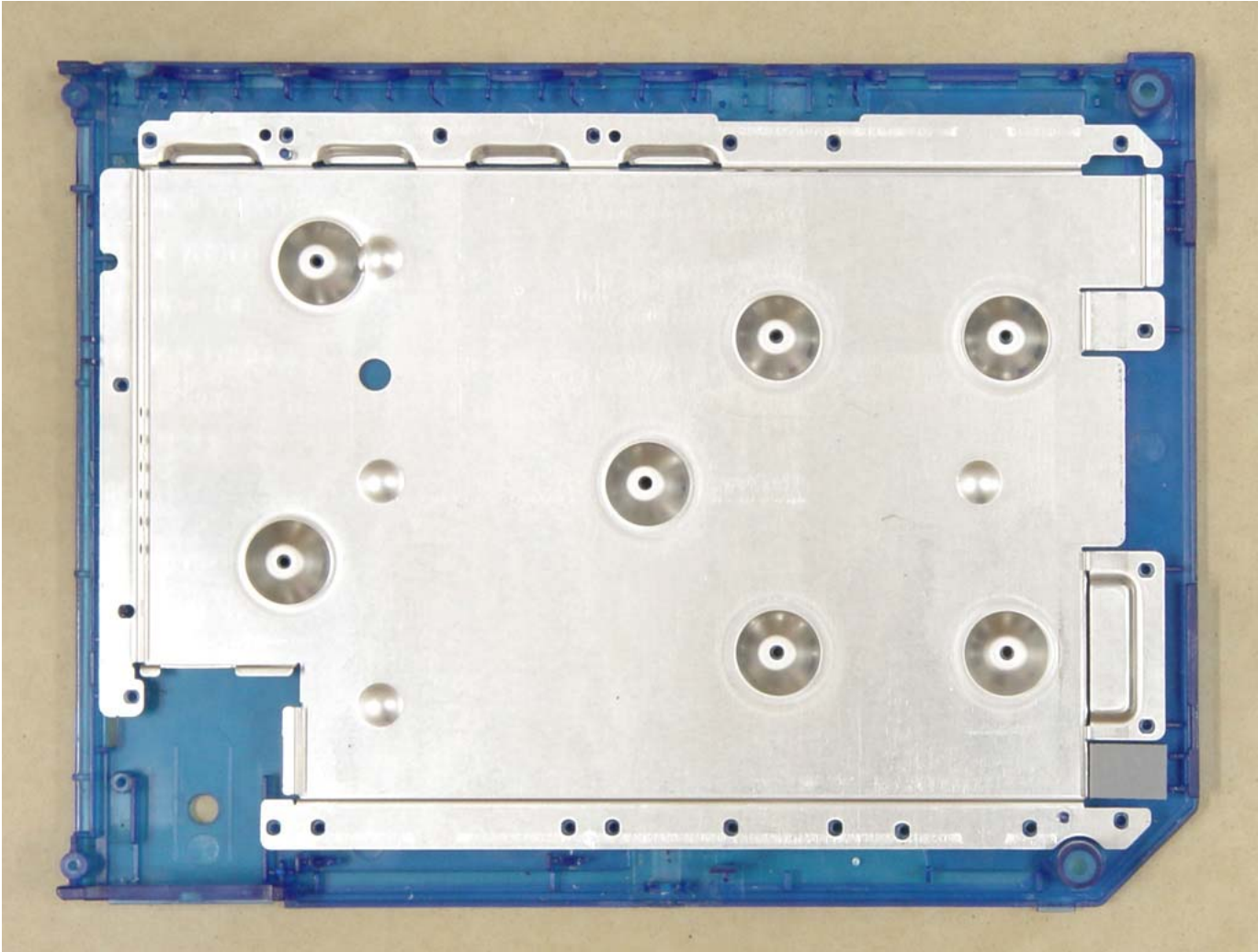
16.Remove all the parts from the left plastic plate.



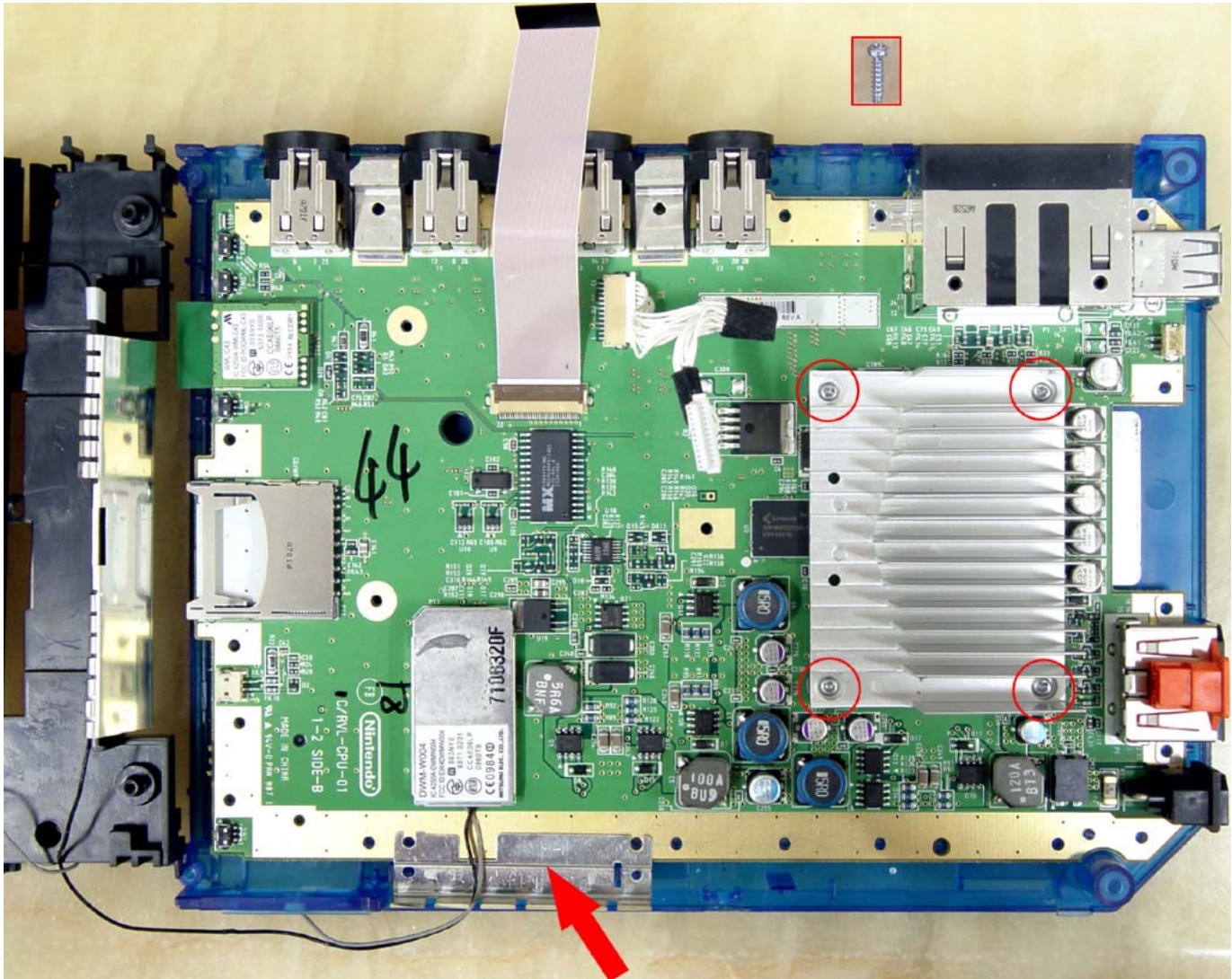
17. Place the rubber stand from the left plate to the same position of the replacement i case.



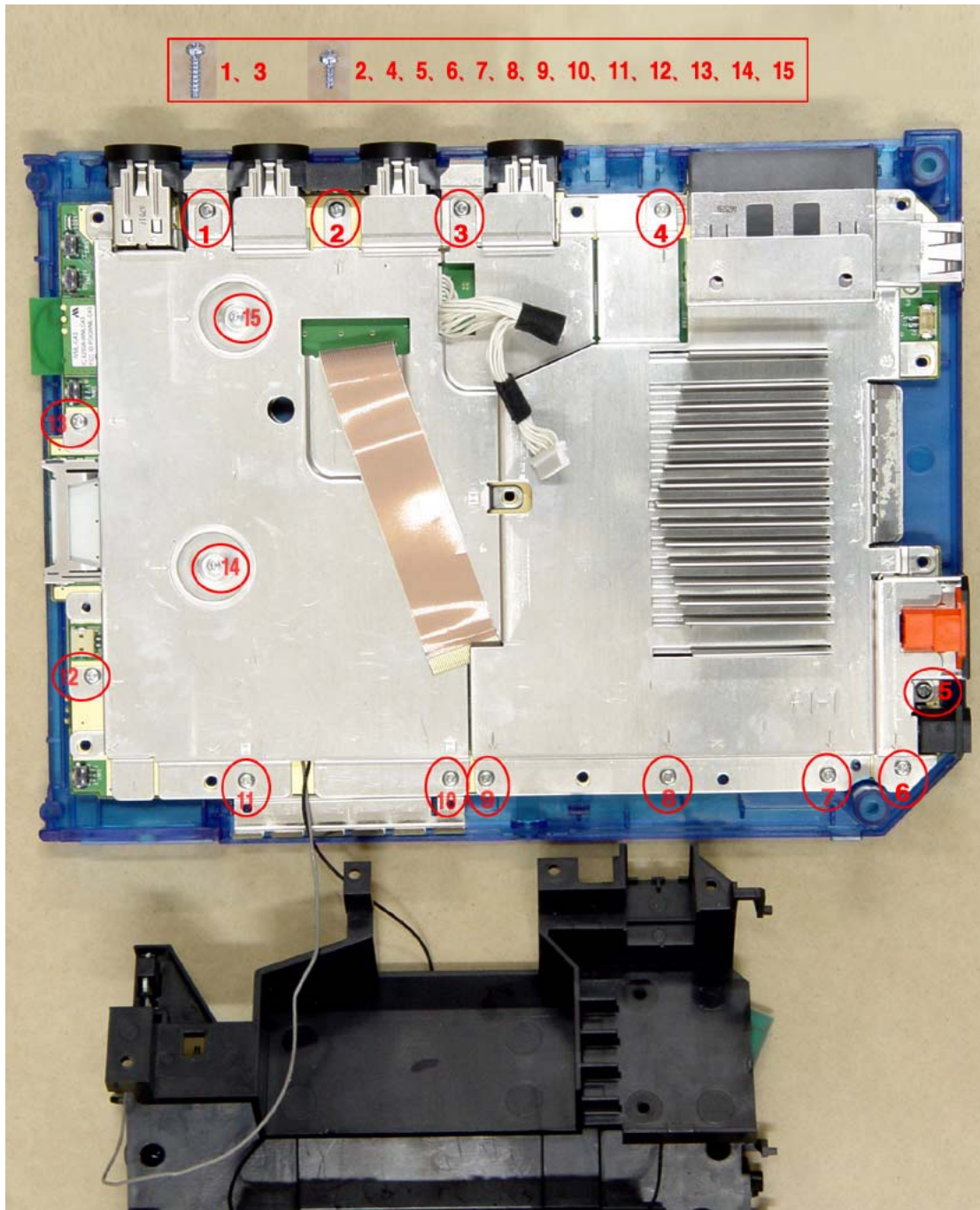
18.put back the metal plate to the replacement i case.



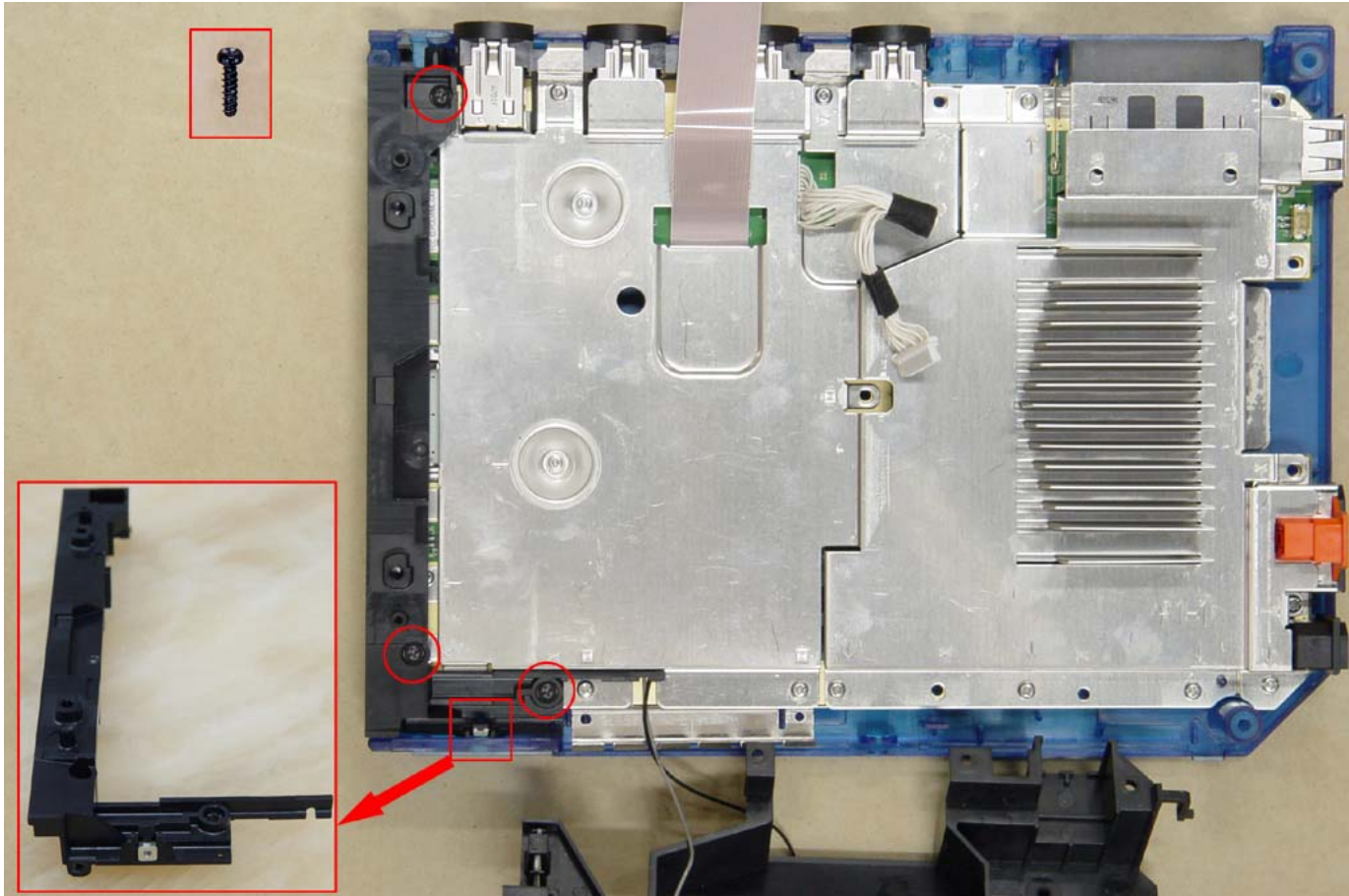
19. replace the mother board, put the indicated small metal plate to that position, then put down the heat sink and put on 4 screws.



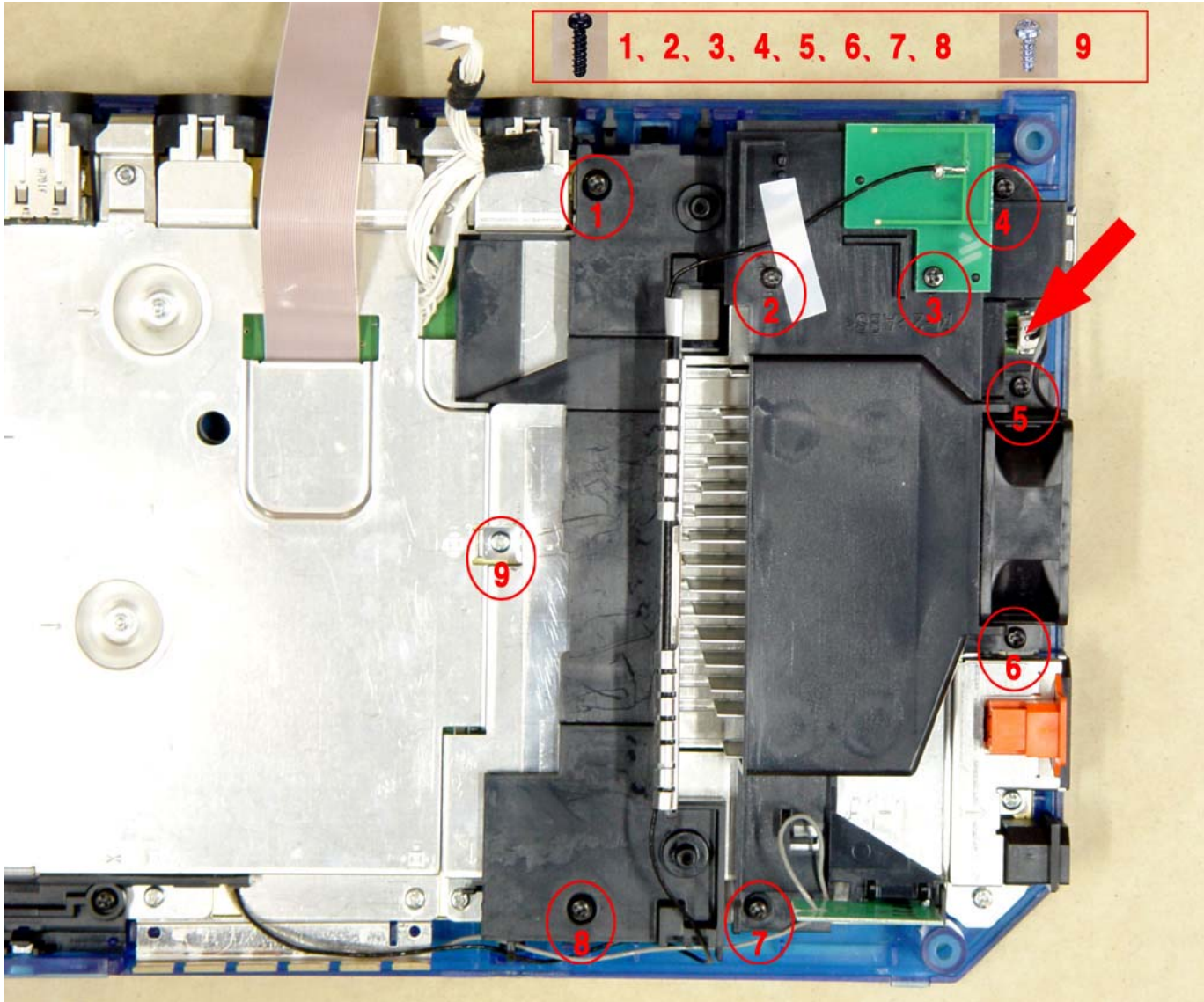
20. Put on the metal cover and those 15 screws.



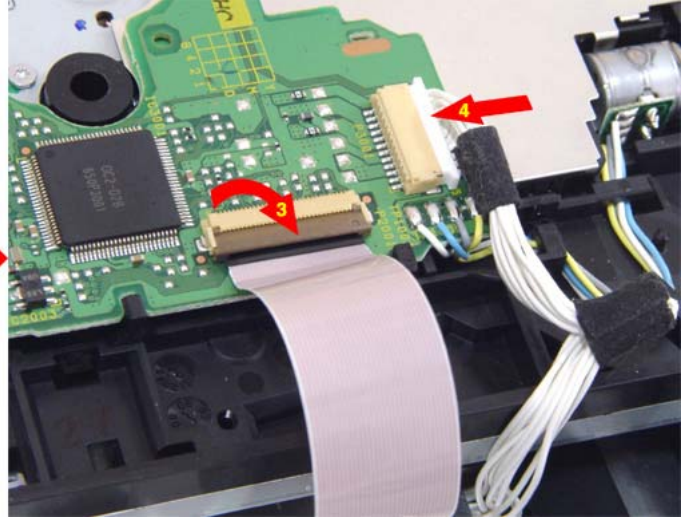
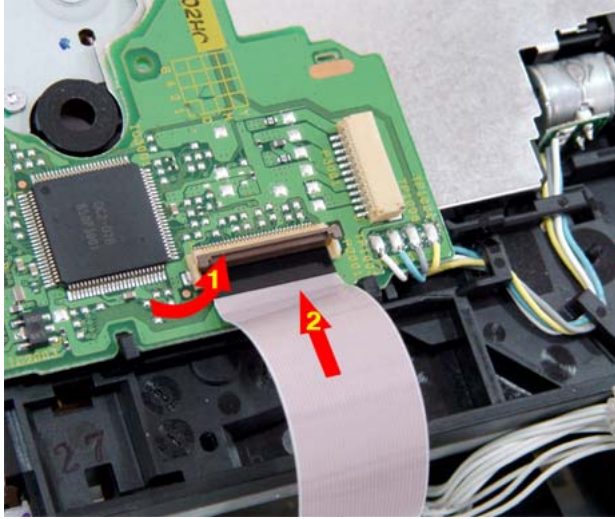
21. Put on the black plastic bar and 3 screws.



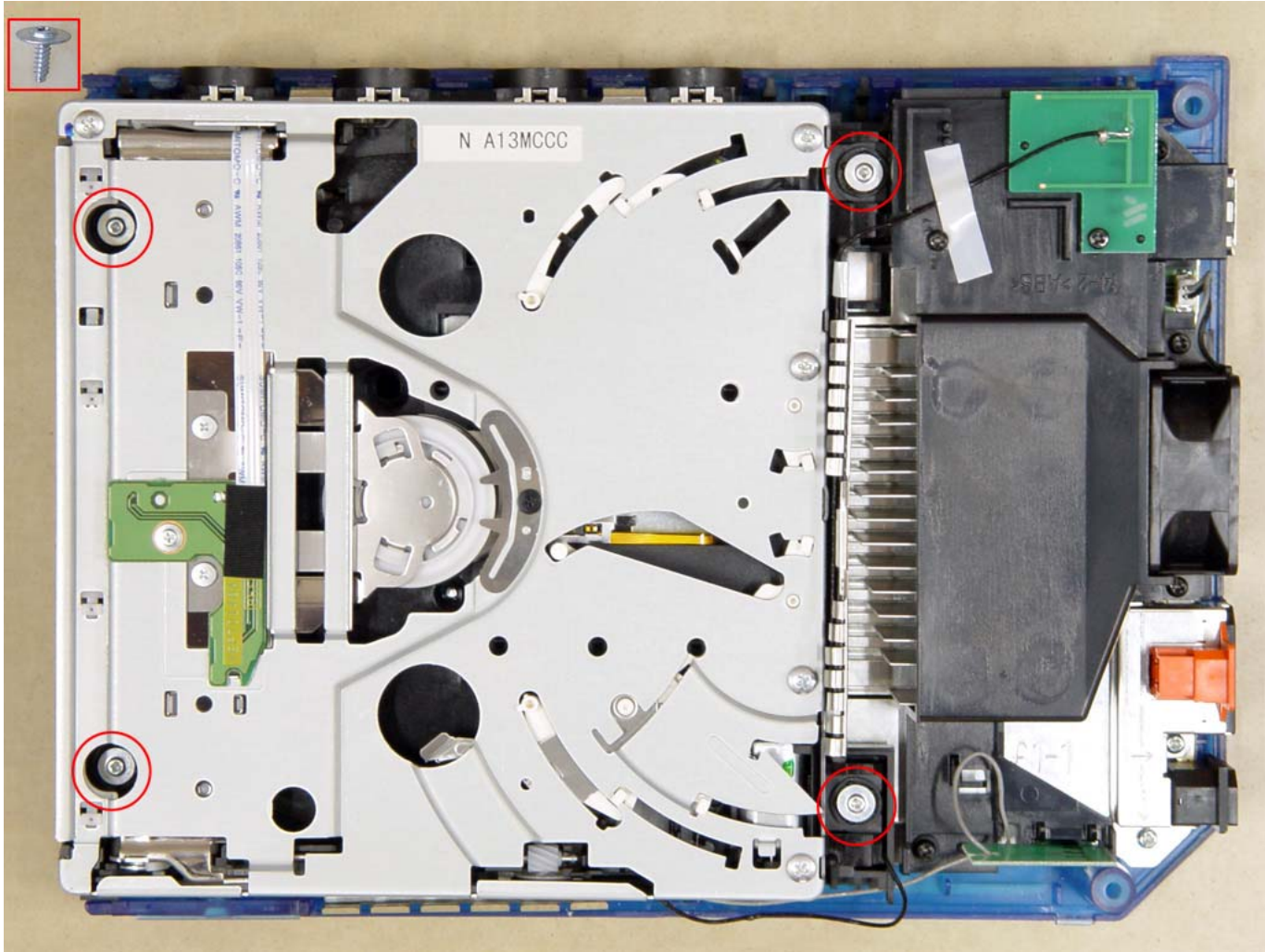
22. Place the fan and the flow wind tunnel, plug on the power source as indicated on the picture then put on 9 screws.



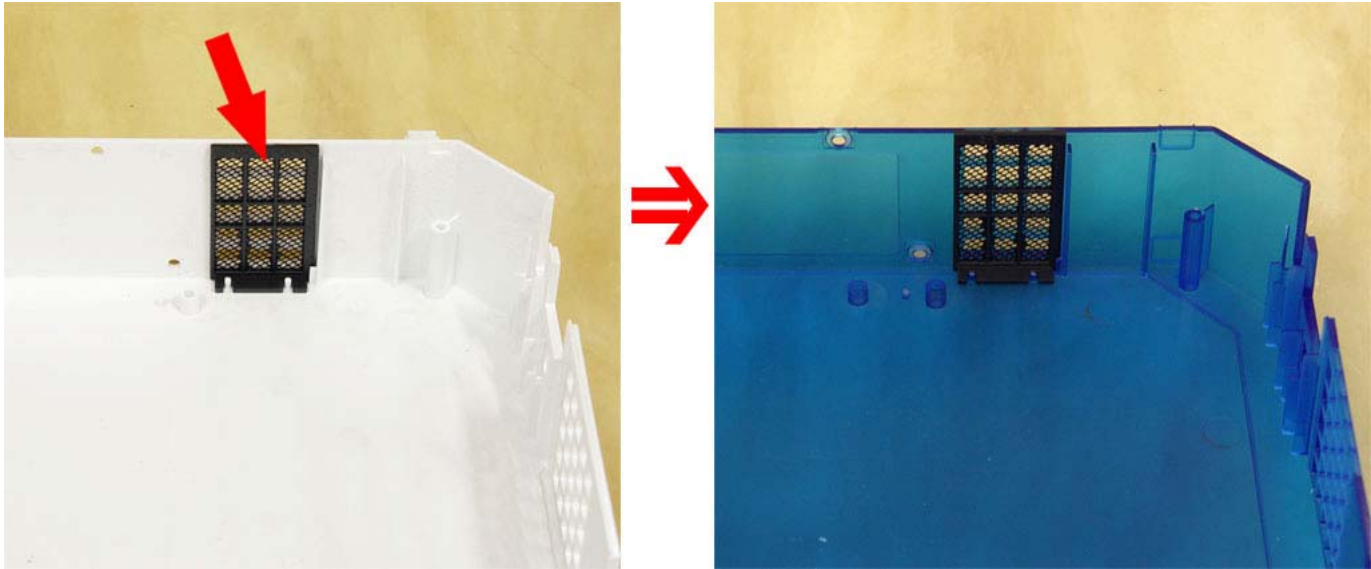
23.Plug the cables .



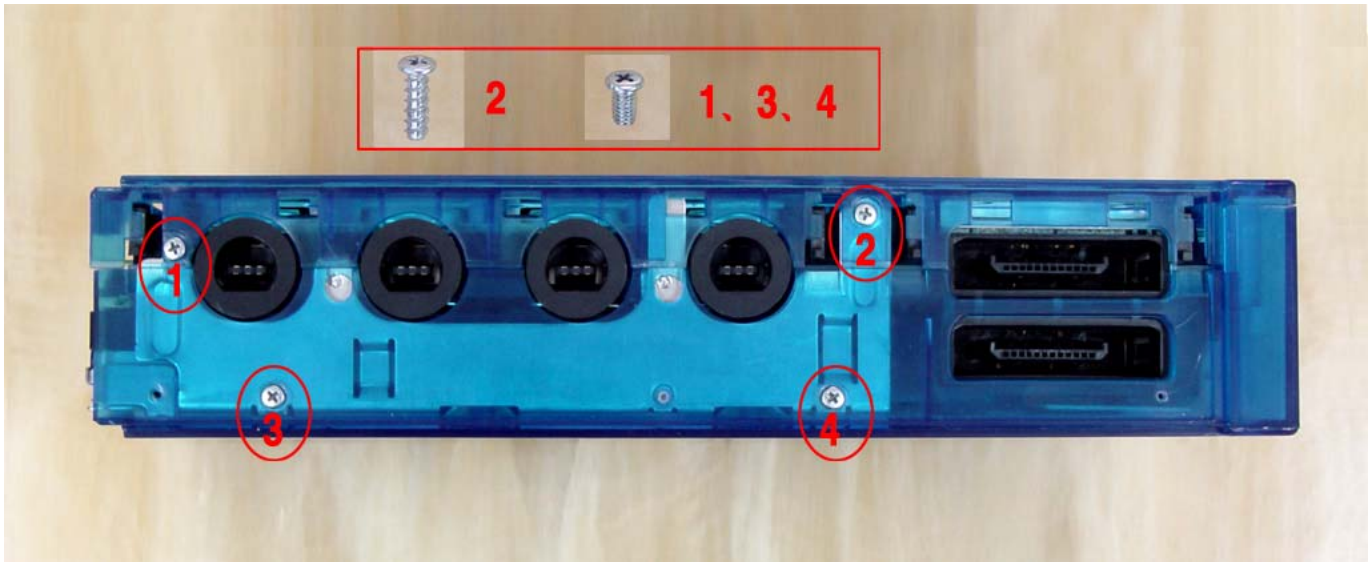
24. Put on 4 screws.



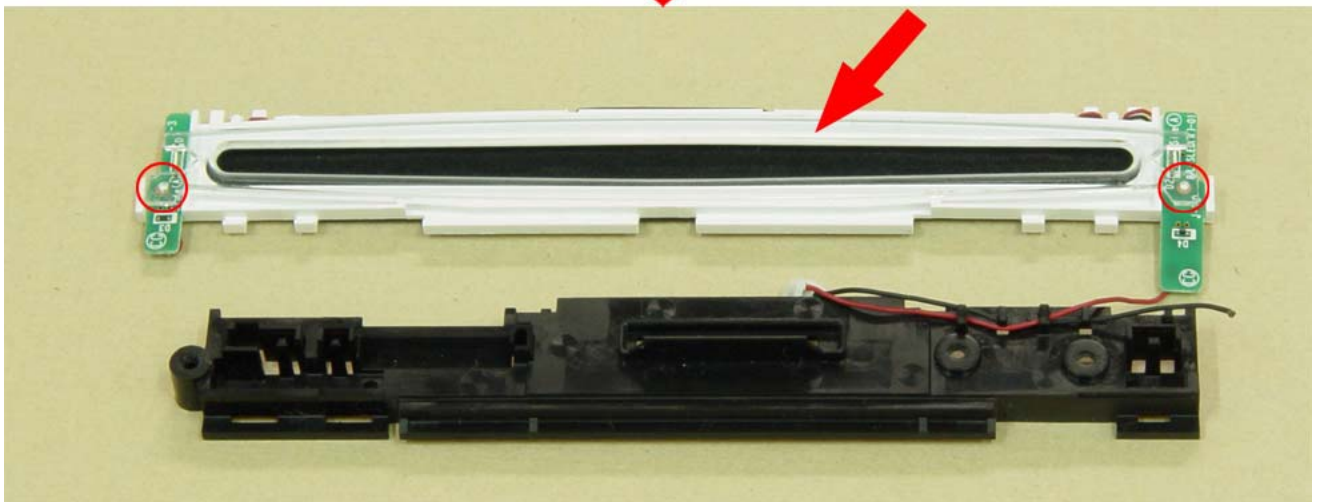
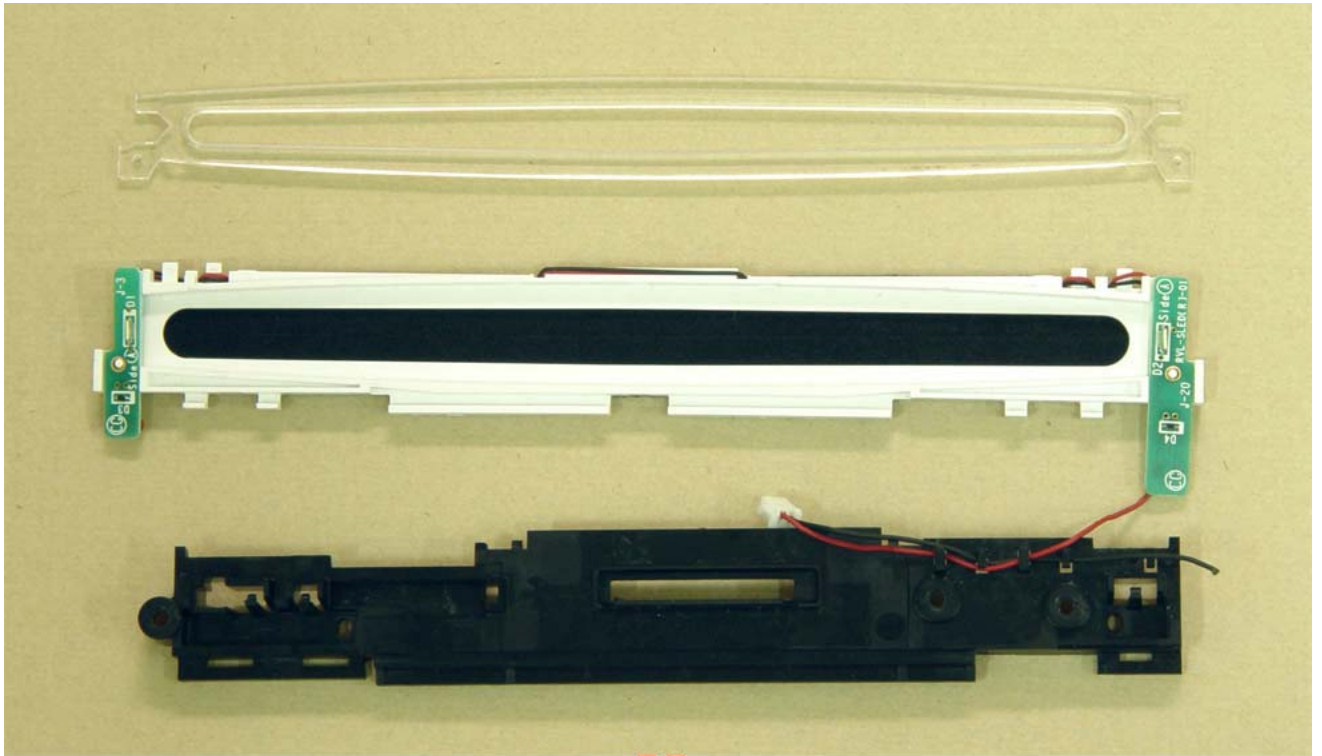
25.As shown on the picture, place the protective dust cover to the i case.



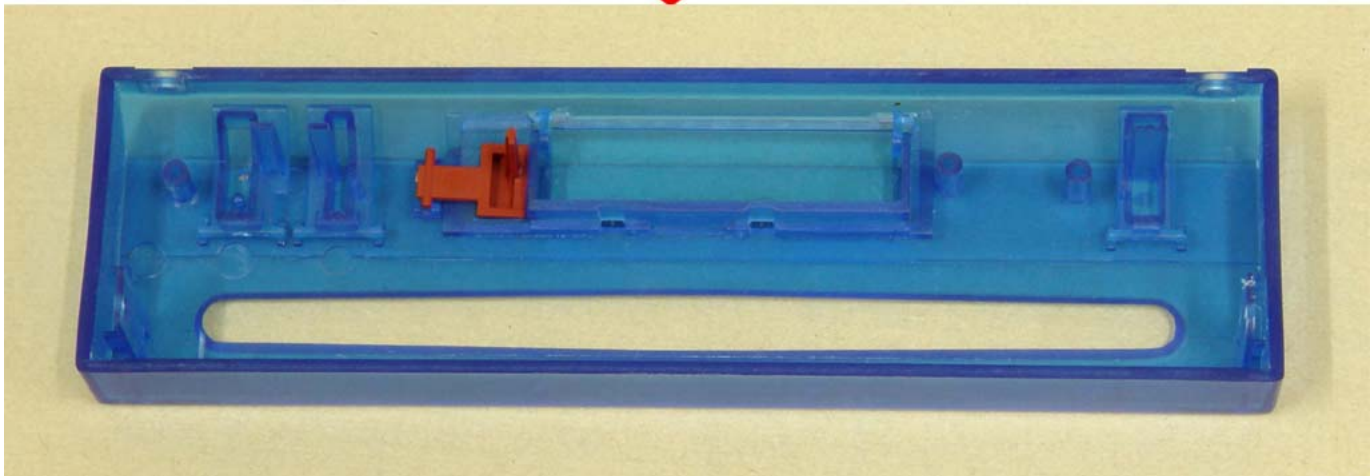
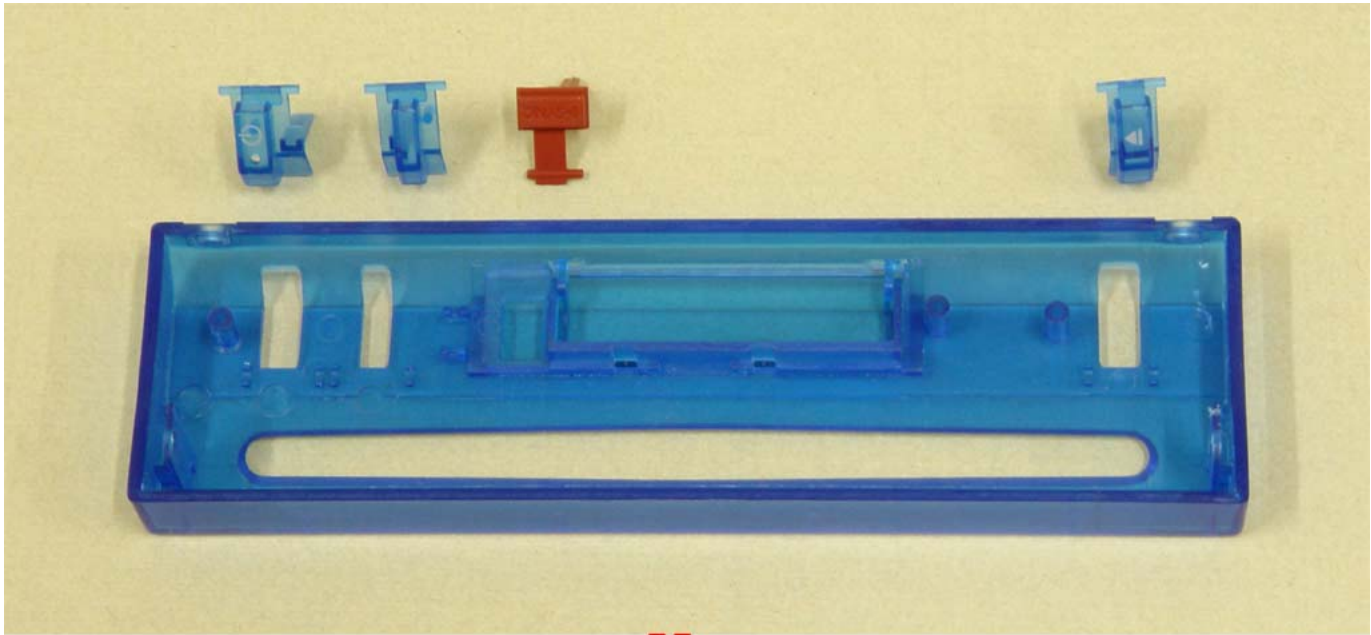
26.Place the the right plate to the console, put on 4 screws.



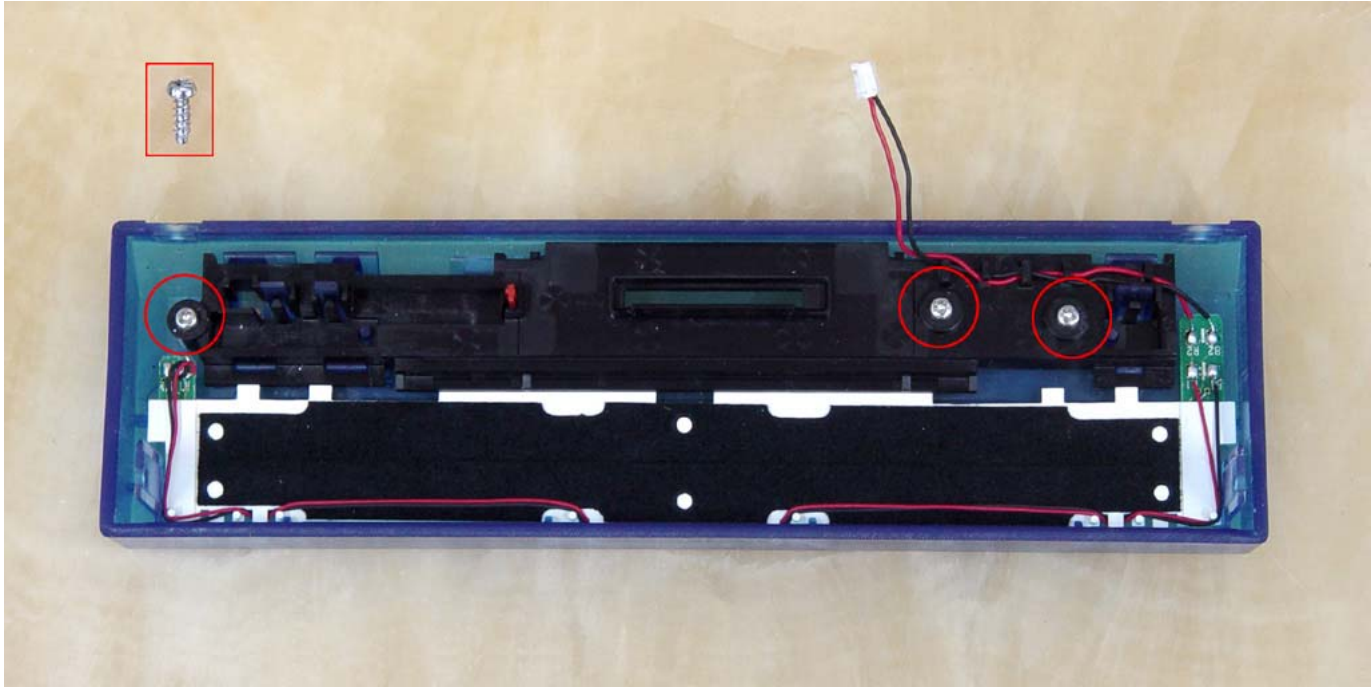
27.As shown in the pictures, put on the LED part.



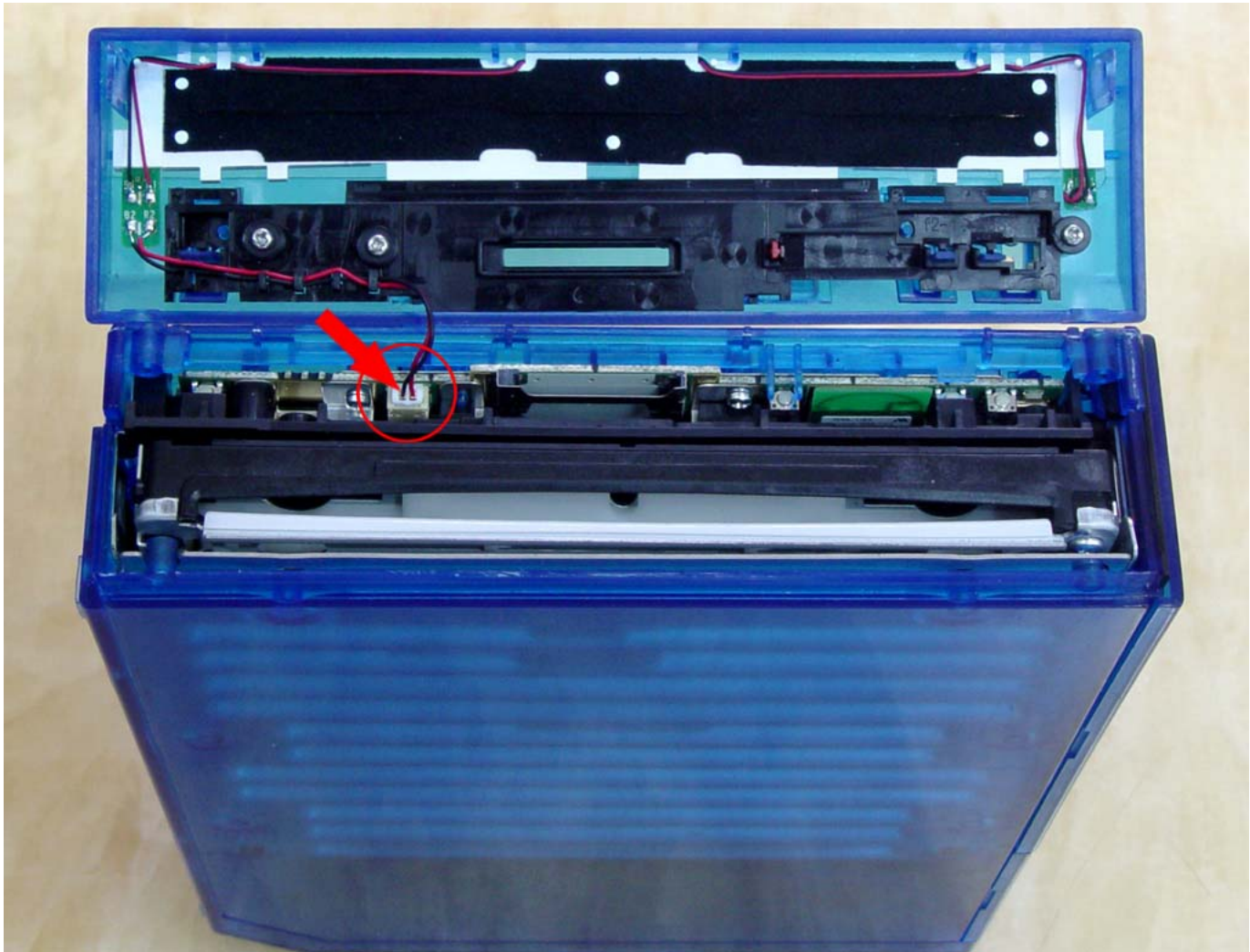
28.Put on those parts to the i case face plate .



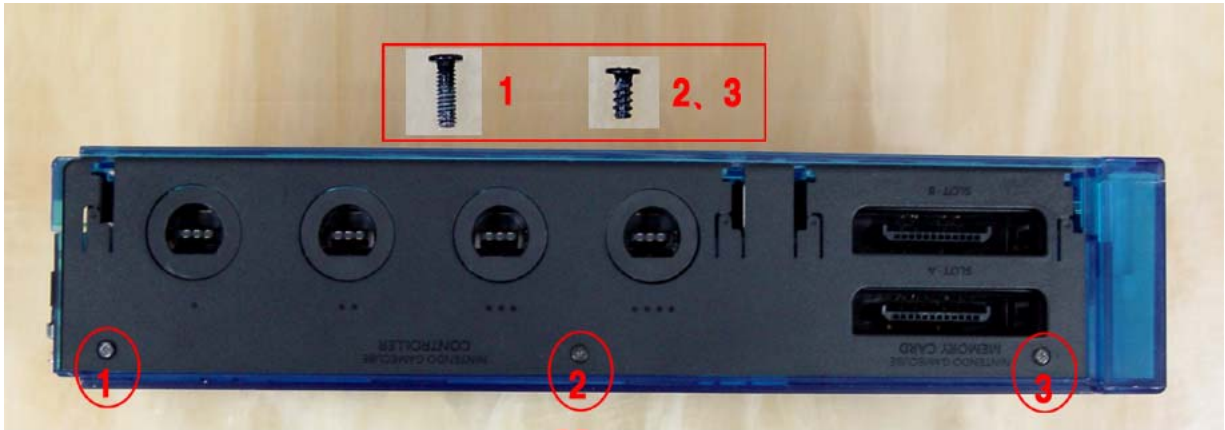
29. Put on 3 screws.



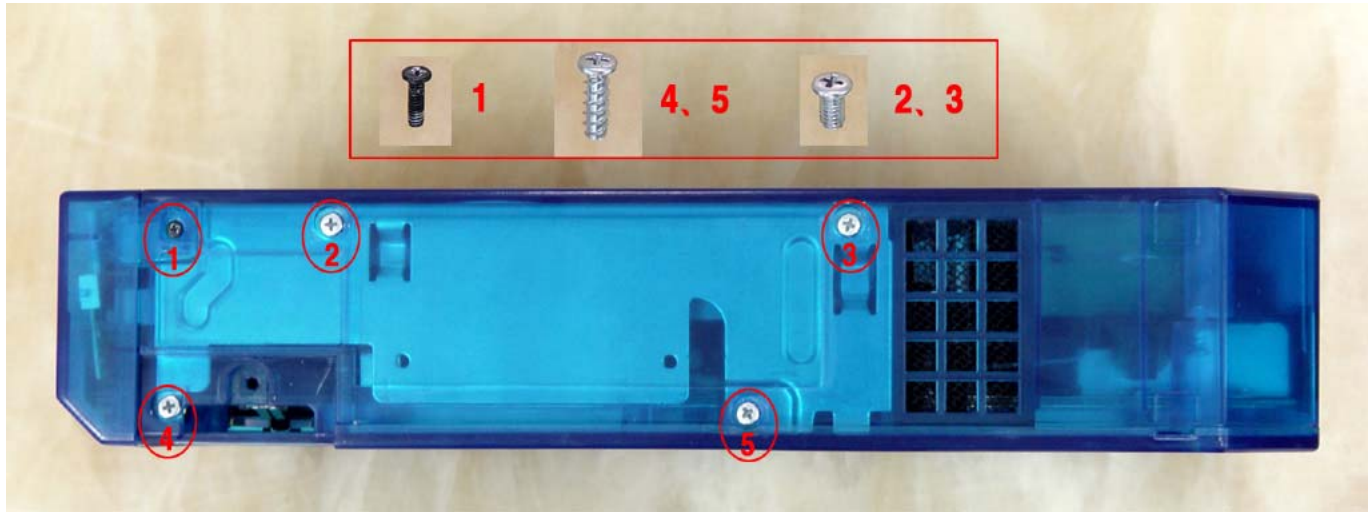
30.Plug on the power source.



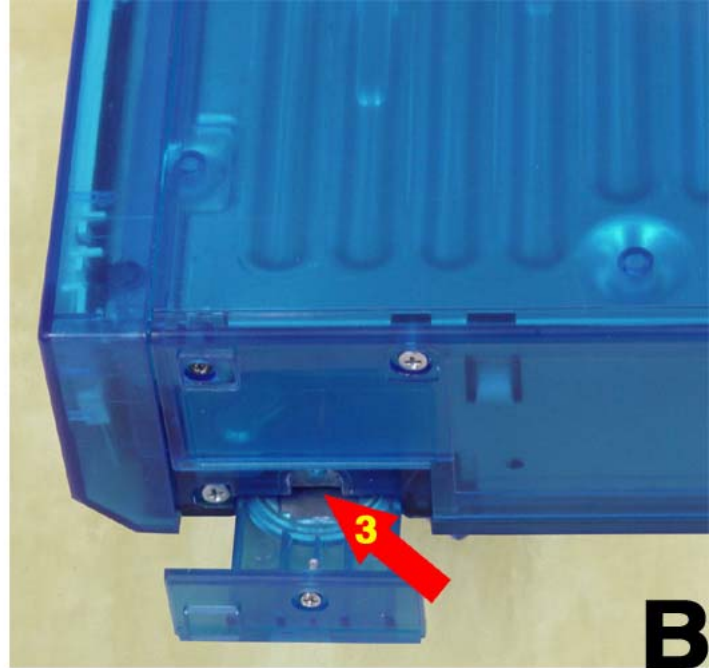
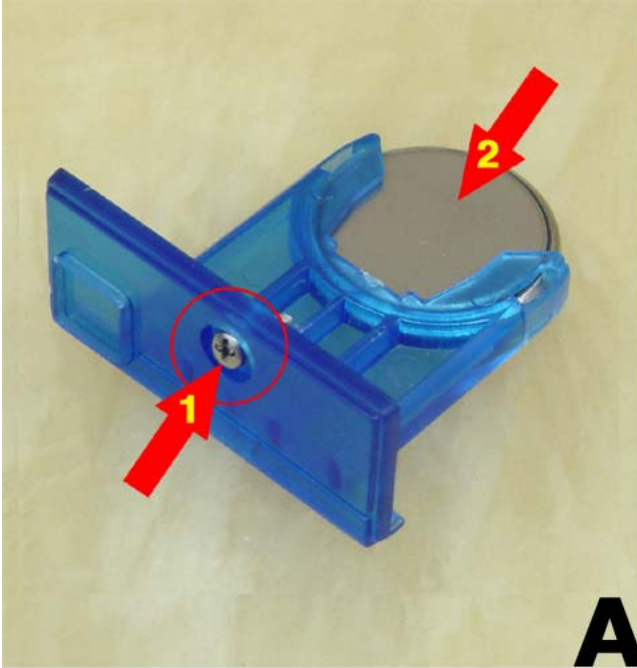
31. Put on the front plastic plates and 3 screws, then install 2 protective dust covers.



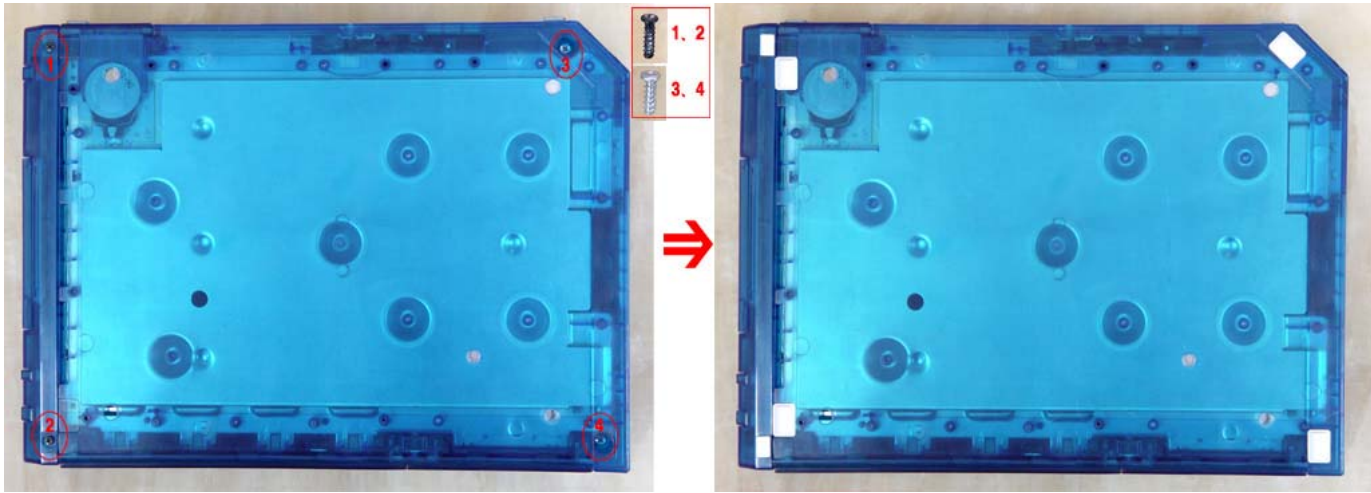
32. Put on 5 screws.



33. As indicated in the picture, put on the screw and the battery, place it back to the console then put on the rubber stands.



34. Put on 4 screws, rubber stands and tape.



35. Installation finished.

